

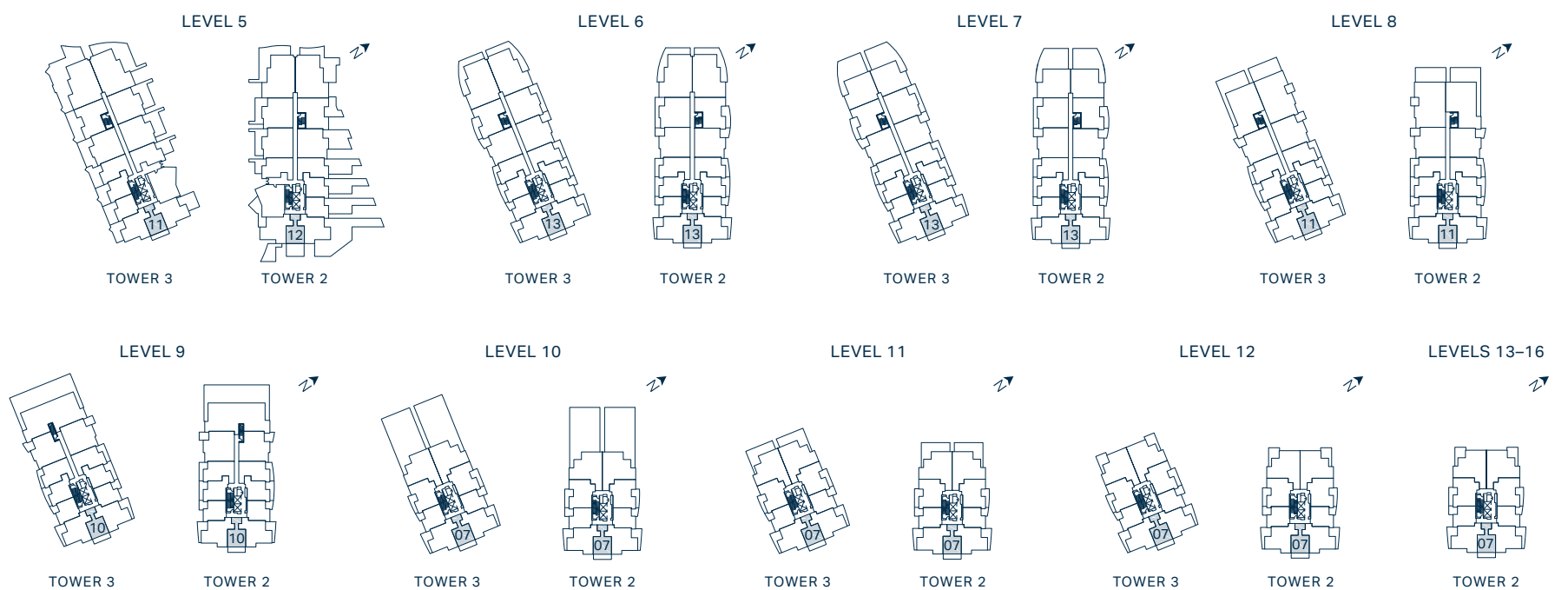
- 1 24" Bosch Stainless Steel Fridge & Freezer
- 2 24" Bosch 4-Burner Gas Cooktop
- 3 21" Broan Hood Fan
- 4 24" Bosch Wall Oven
- 5 24" Bosch Stainless Steel Dishwasher
- 6 15" Silhouette Under Counter Wine Fridge
- 7 Panasonic Microwave
- 8 Full Sized Electrolux Stacked Washing Machine & Dryer

Interior 535 SF
 Exterior 125 – 408 SF
 Total 660 – 943 SF



HOME 512-408 SF

FLOOR PLAN IN TOWER 3 WILL BE THE REVERSED LAYOUT



Floor plan may be reversed layout depending on tower and orientation. This is not an offering for sale. Any such offering can only be made after filing a disclosure statement. The builder reserves the right to make changes, modifications or substitutions to the building design, specifications and floor plans should they be necessary. Square footage and room sizes are approximate and actual square footage may vary slightly. E.&O.E.

AQUA

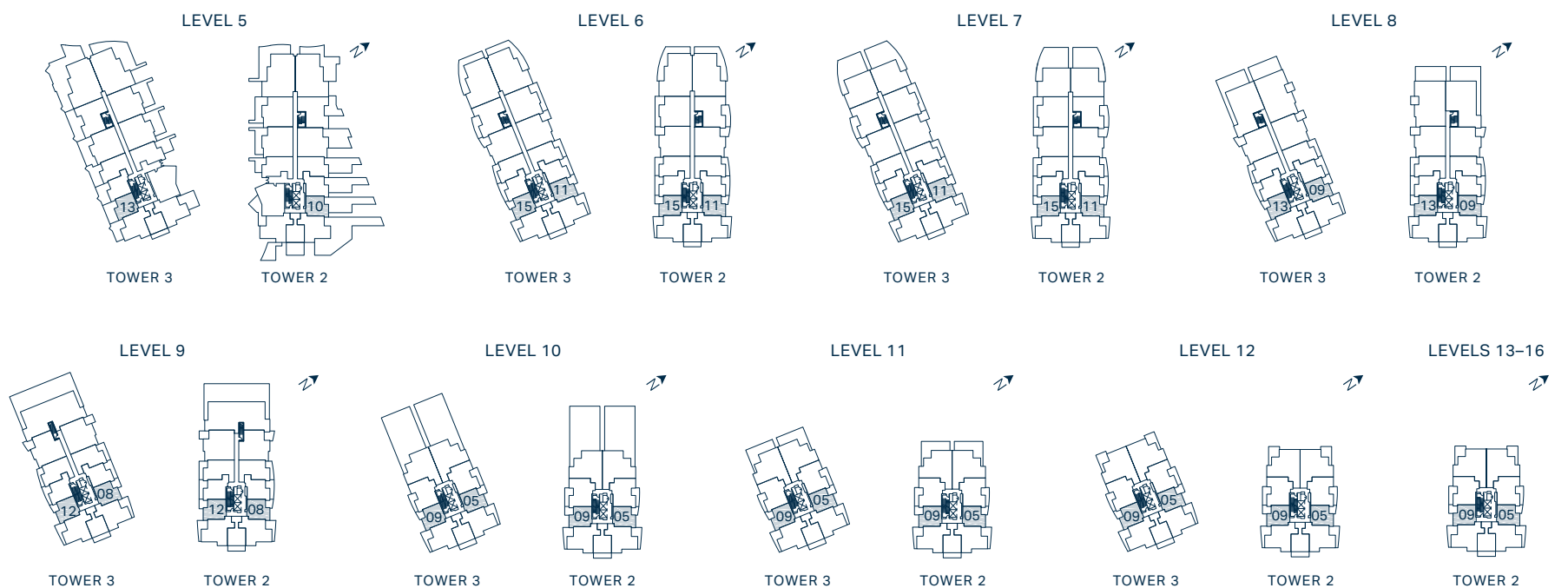
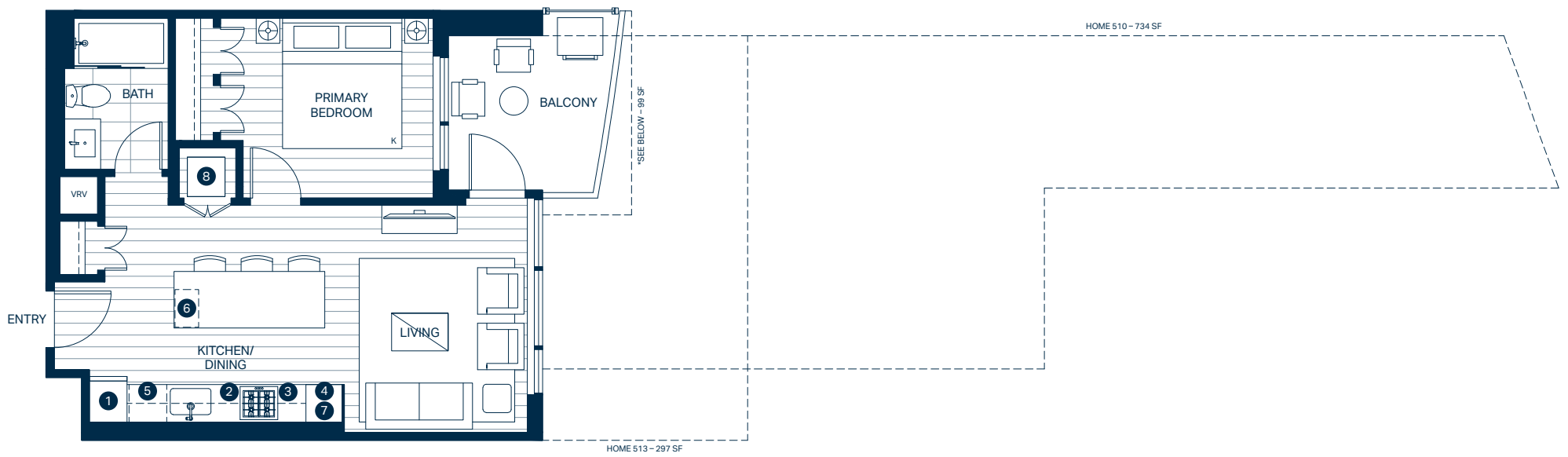
WATERFRONT VILLAGE

A2

1 Bedroom, 1 Bath

- 1 24" Bosch Stainless Steel Fridge & Freezer
- 2 24" Bosch 4-Burner Gas Cooktop
- 3 21" Broan Hood Fan
- 4 24" Bosch Wall Oven
- 5 24" Bosch Stainless Steel Dishwasher
- 6 15" Silhouette Under Counter Wine Fridge
- 7 Panasonic Microwave
- 8 Full Sized Electrolux Stacked Washing Machine & Dryer

Interior 540 SF
 Exterior 80 – 734 SF
 Total 620 – 1,274 SF

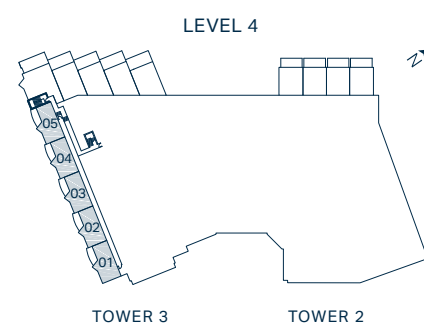
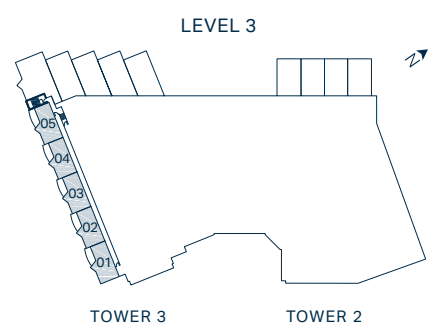
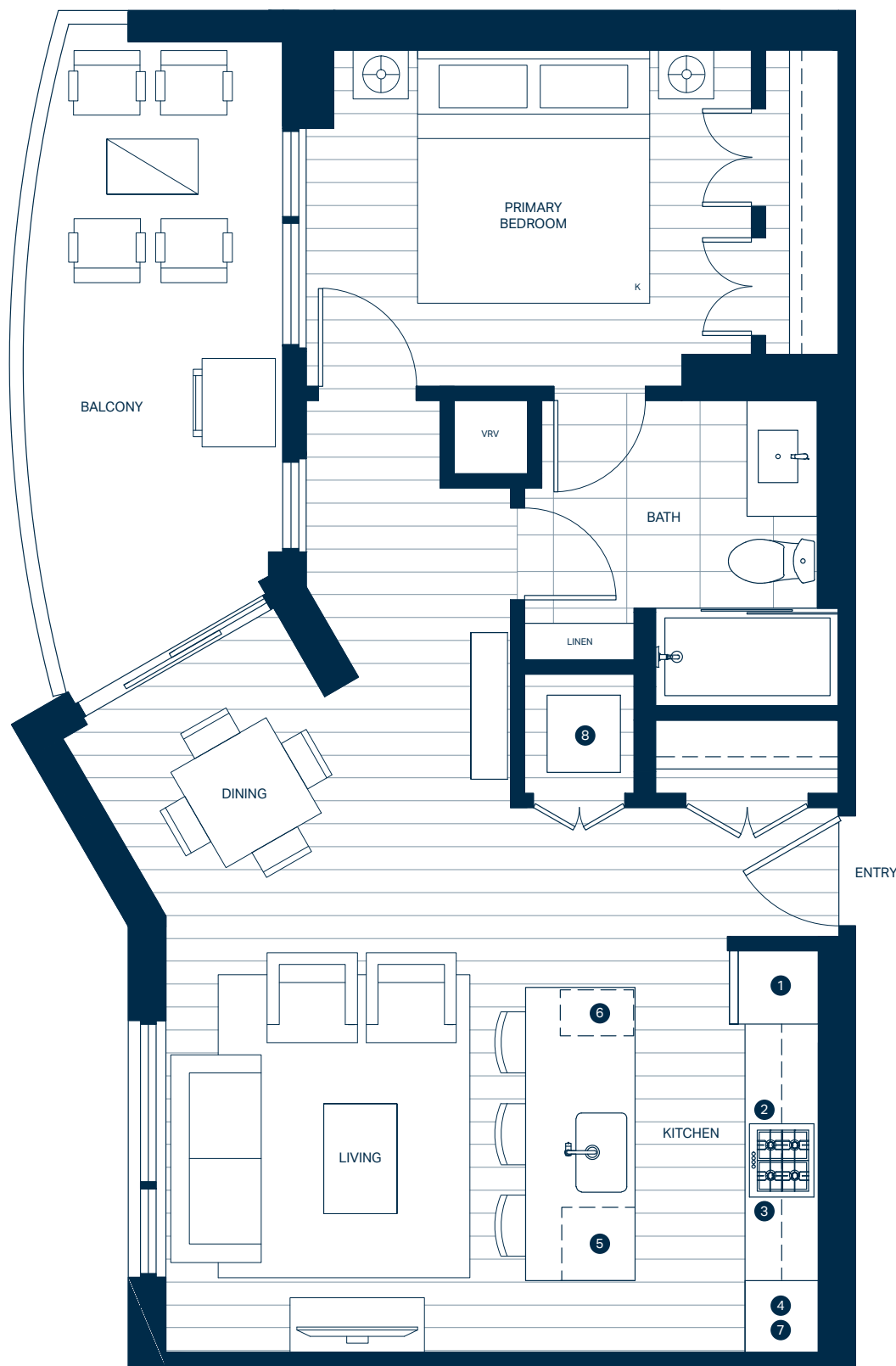


*TOWER 2 BALCONY VARIATIONS: 615, 715, 813, 912, 1009, 1109, 1209, 1309, 1409, 1509, 1609
 TOWER 3 BALCONY VARIATIONS: 611, 711, 809, 908, 1005, 1105, 1205

Floor plan may be reversed layout depending on tower and orientation. This is not an offering for sale. Any such offering can only be made after filing a disclosure statement. The builder reserves the right to make changes, modifications or substitutions to the building design, specifications and floor plans should they be necessary. Square footage and room sizes are approximate and actual square footage may vary slightly. E.&O.E.

- 1 24" Bosch Stainless Steel Fridge & Freezer
- 2 24" Bosch 4-Burner Gas Cooktop
- 3 21" Broan Hood Fan
- 4 24" Bosch Wall Oven
- 5 24" Bosch Stainless Steel Dishwasher
- 6 15" Silhouette Under Counter Wine Fridge
- 7 Panasonic Microwave
- 8 Full Sized Electrolux Stacked Washing Machine & Dryer

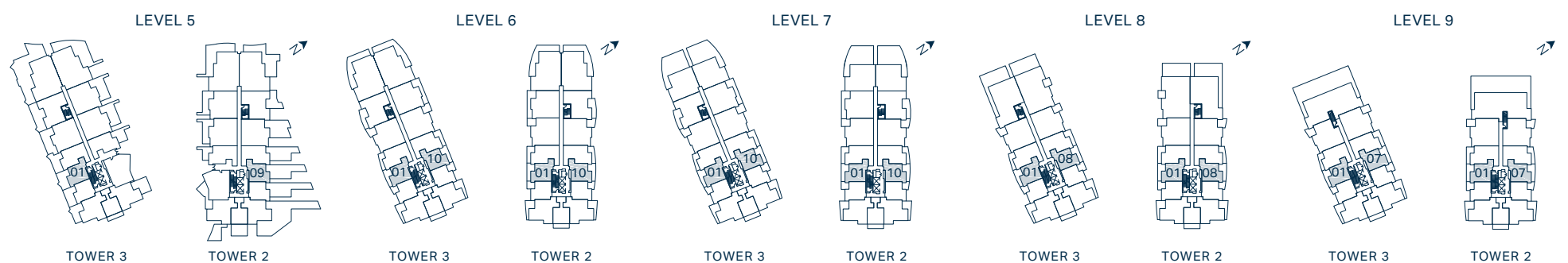
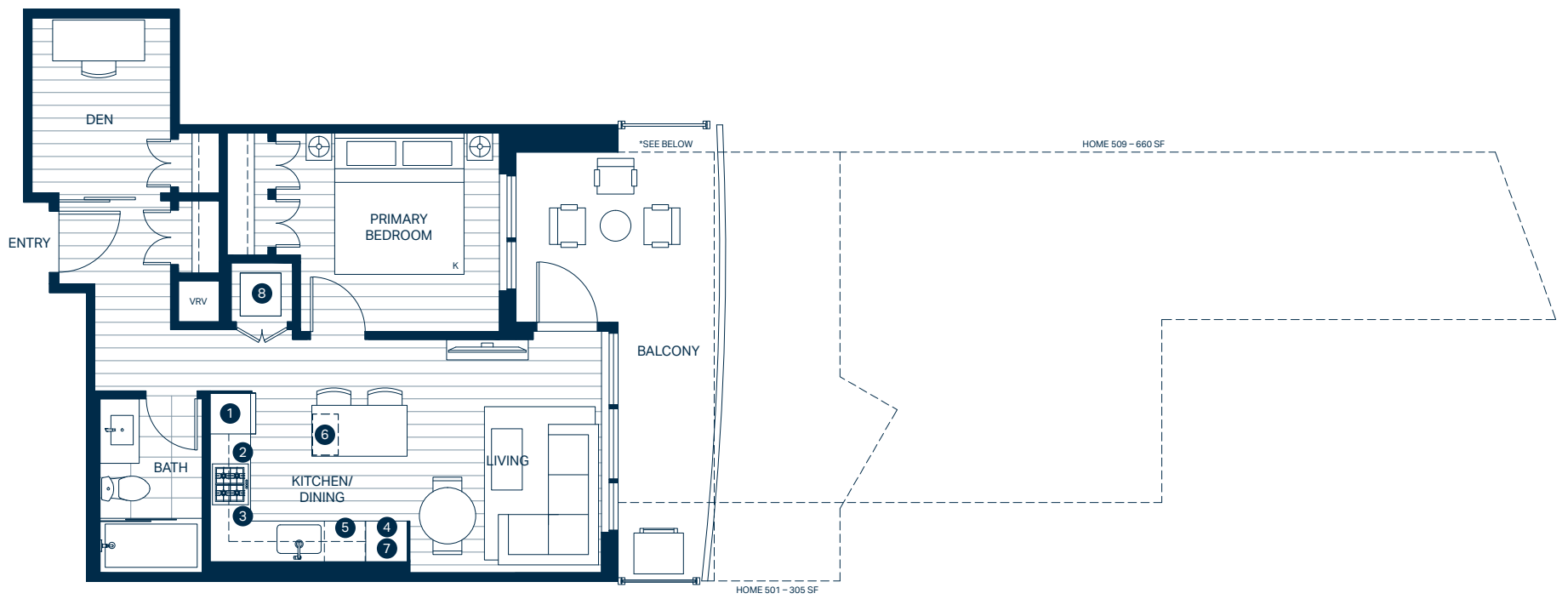
Interior 655 – 660 SF
 Exterior 125 SF
 Total 780 – 785 SF



1 Bedroom + Den, 1 Bath

- 1 24" Bosch Stainless Steel Fridge & Freezer
- 2 24" Bosch 4-Burner Gas Cooktop
- 3 21" Broan Hood Fan
- 4 24" Bosch Wall Oven
- 5 24" Bosch Stainless Steel Dishwasher
- 6 15" Silhouette Under Counter Wine Fridge
- 7 Panasonic Microwave
- 8 Full Sized Electrolux Stacked Washing Machine & Dryer

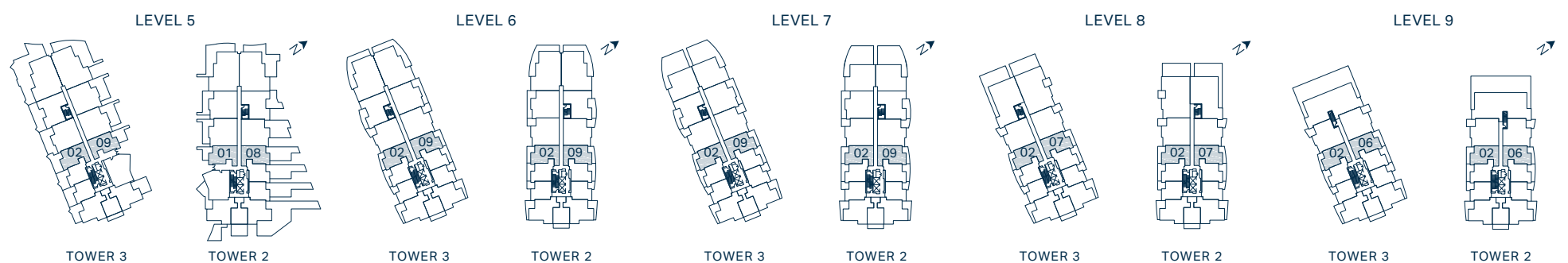
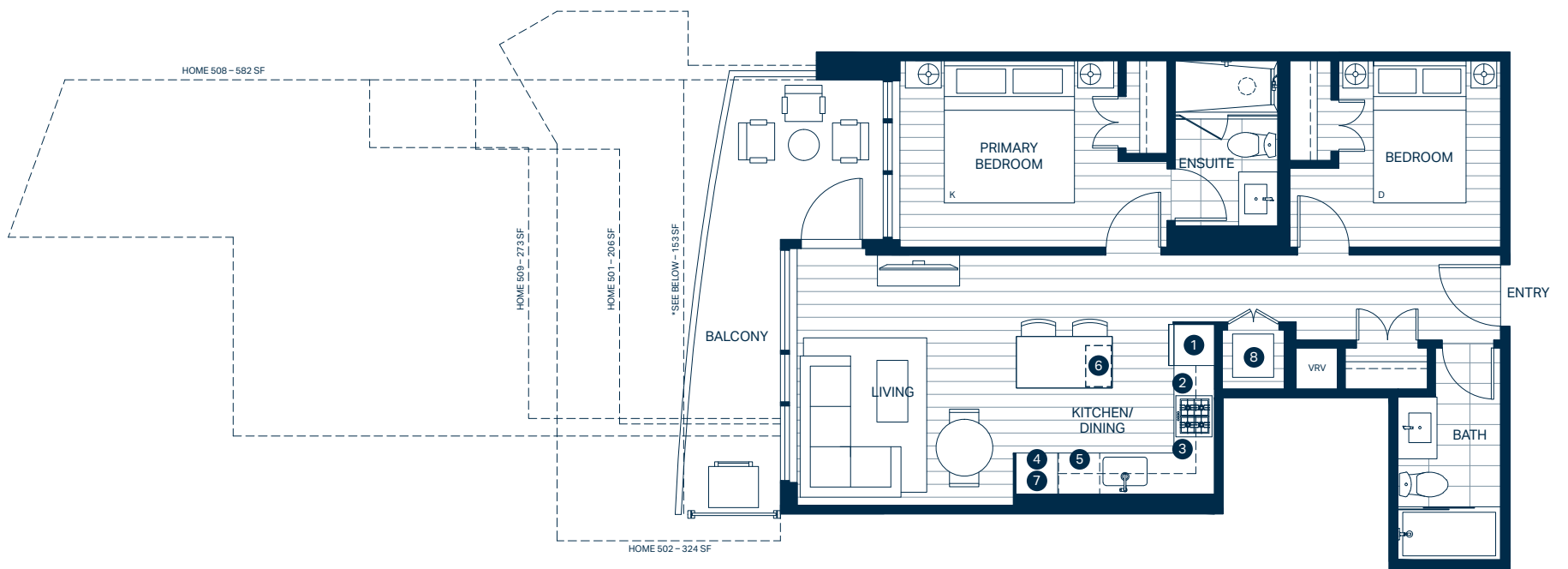
Interior 595 SF
 Exterior 165 – 660 SF
 Total 760 – 1,255 SF



* TOWER 2 BALCONY VARIATIONS: 601, 701, 801, 901
 TOWER 3 BALCONY VARIATIONS: 610, 710, 808, 907

- 1 24" Bosch Stainless Steel Fridge & Freezer
- 2 24" Bosch 4-Burner Gas Cooktop
- 3 21" Broan Hood Fan
- 4 24" Bosch Wall Oven
- 5 24" Bosch Stainless Steel Dishwasher
- 6 15" Silhouette Under Counter Wine Fridge
- 7 Panasonic Microwave
- 8 Full Sized Electrolux Stacked Washing Machine & Dryer

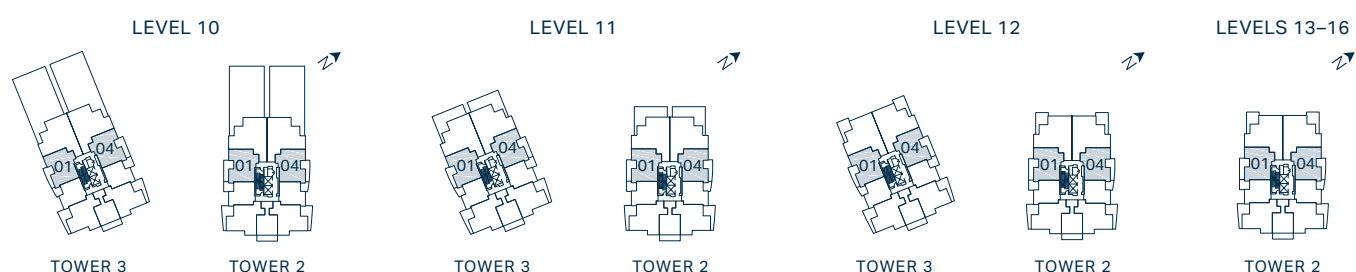
Interior 715 SF
 Exterior 136 – 582 SF
 Total 851 – 1,297 SF



* TOWER 2 BALCONY VARIATIONS: 602, 702, 802, 902
 TOWER 3 BALCONY VARIATIONS: 609, 709, 807, 906

- 1 36" Bosch Stainless Steel Fridge & Freezer
- 2 30" Bosch 5-Burner Gas Cooktop
- 3 21" Broan Hood Fan
- 4 30" Bosch Wall Oven
- 5 24" Bosch Stainless Steel Dishwasher
- 6 18" Thermador Full Height Stainless Steel Wine Fridge
- 7 Panasonic Microwave
- 8 Full Sized Electrolux Stacked Washing Machine & Dryer
- 9 Pantry

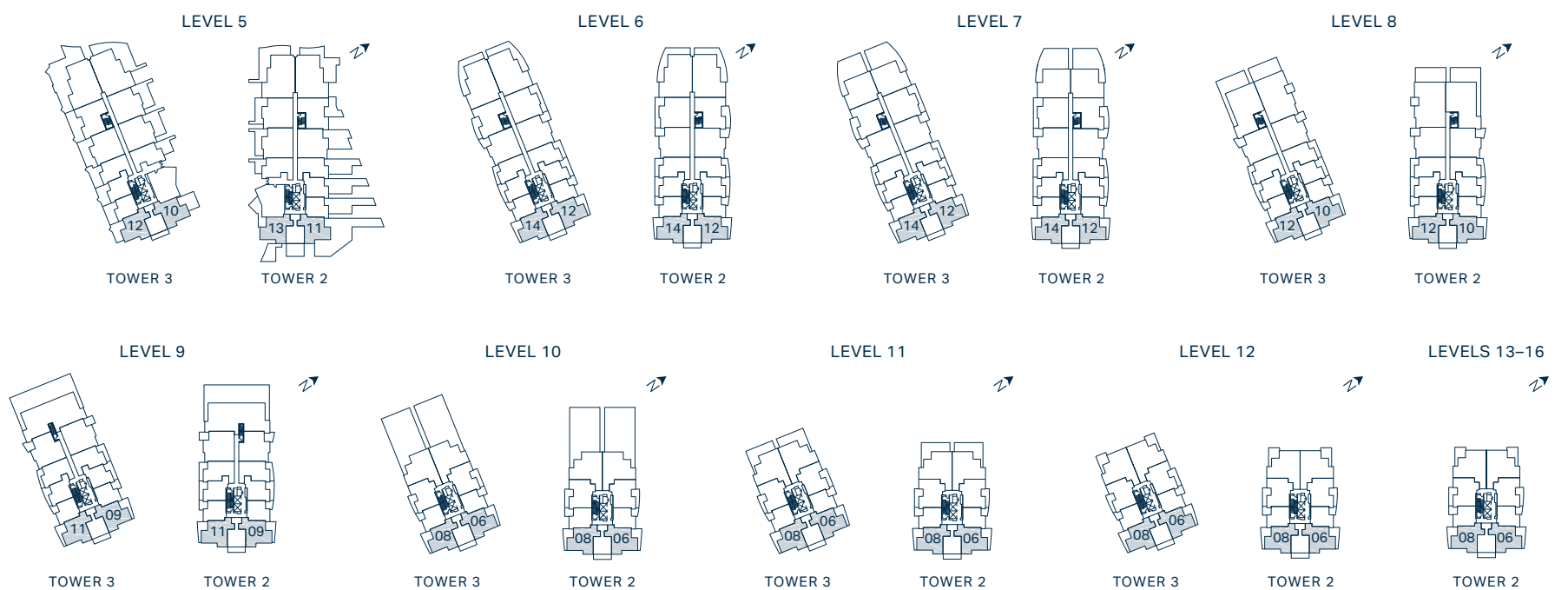
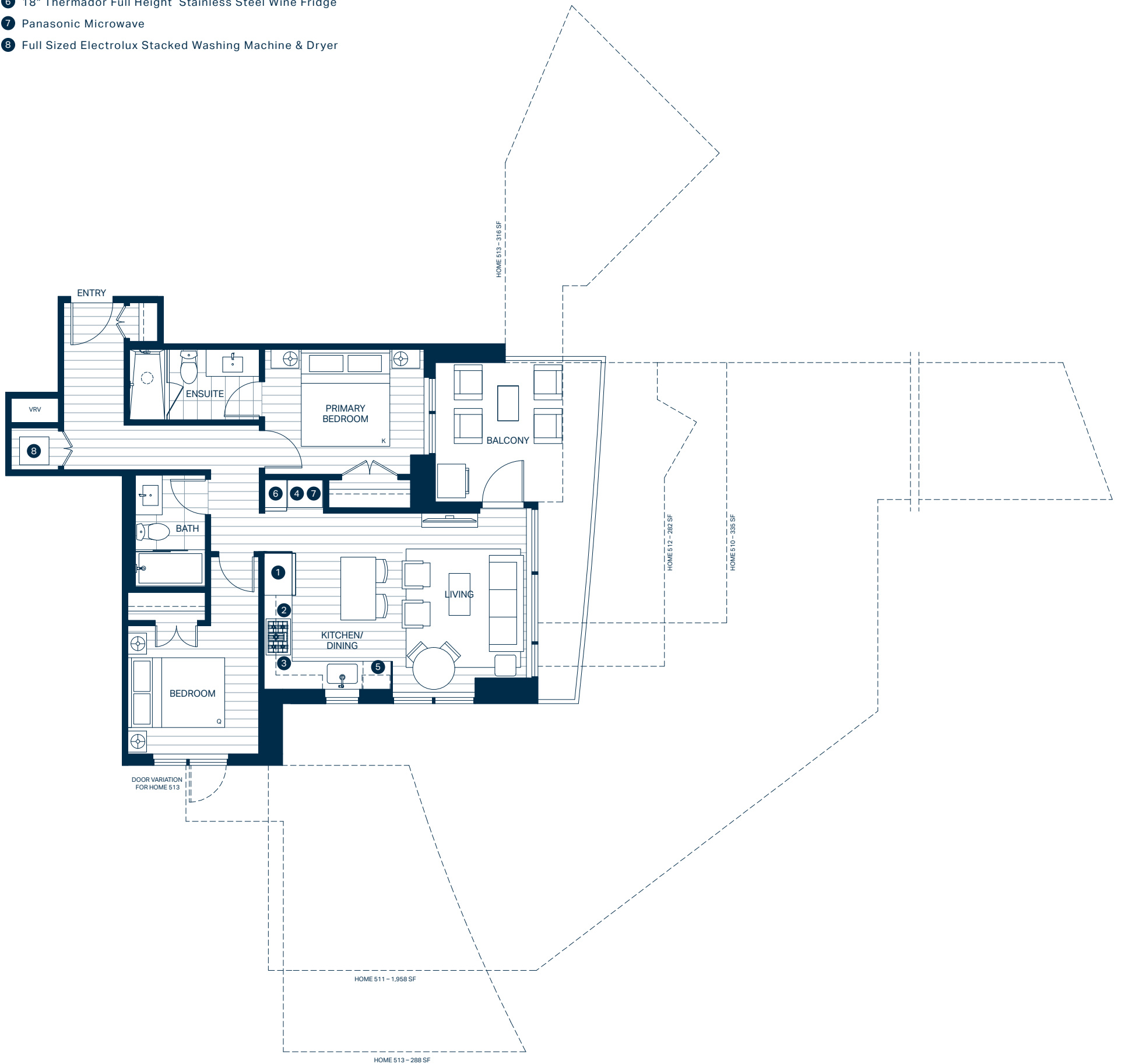
Interior 820 SF
 Exterior 142 – 155 SF
 Total 962 – 975 SF



* TOWER 2 BALCONY VARIATIONS: 1001, 1101, 1201, 1301, 1401, 1501, 1601
 TOWER 3 BALCONY VARIATIONS: 1004, 1104, 1204

- 1 36" Bosch Stainless Steel Fridge & Freezer
- 2 30" Bosch 5-Burner Gas Cooktop
- 3 21" Broan Hood Fan
- 4 30" Bosch Wall Oven
- 5 24" Bosch Stainless Steel Dishwasher
- 6 18" Thermador Full Height Stainless Steel Wine Fridge
- 7 Panasonic Microwave
- 8 Full Sized Electrolux Stacked Washing Machine & Dryer

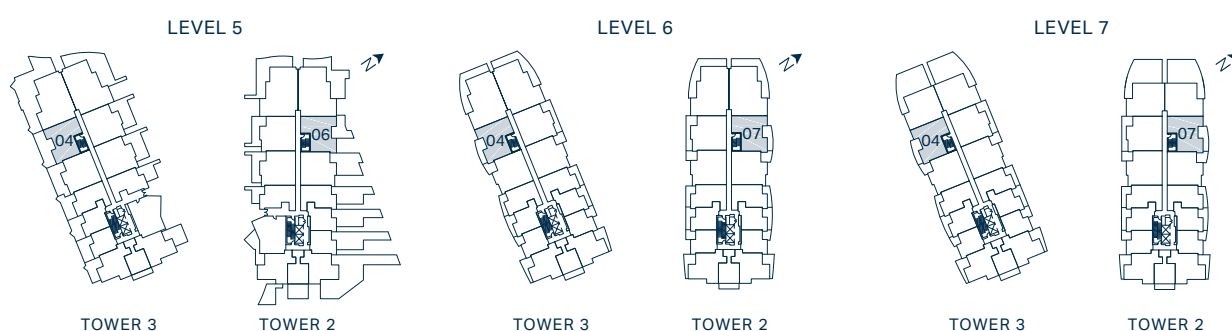
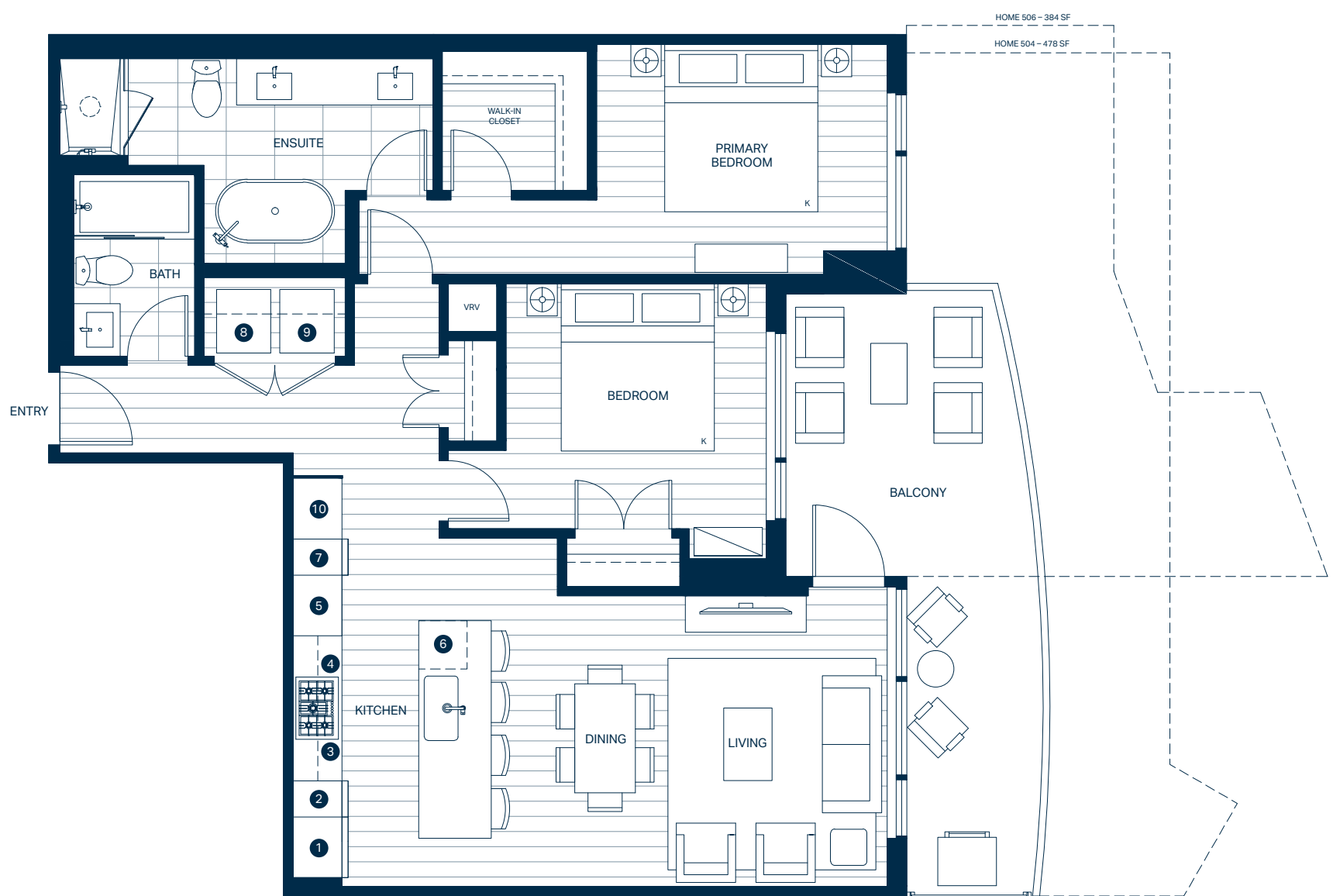
Interior 820 SF
 Exterior 184 – 1,958 SF
 Total 1,004 – 2,778 SF



Floor plan may be reversed layout depending on tower and orientation. This is not an offering for sale. Any such offering can only be made after filing a disclosure statement. The builder reserves the right to make changes, modifications or substitutions to the building design, specifications and floor plans should they be necessary. Square footage and room sizes are approximate and actual square footage may vary slightly. E.&O.E.

- 1 24" Thermador Integrated Refrigerator
- 2 18" Thermador Integrated Freezer
- 3 30" Thermador 5-Burner Gas Cooktop
- 4 21" Broan Hood Fan
- 5 30" Thermador Combination Wall Oven / Speed Oven
- 6 24" Thermador Integrated Dishwasher
- 7 18" Thermador Full Height Integrated Wine Fridge
- 8 Electrolux Full Sized Washing Machine
- 9 Electrolux Full Sized Dryer
- 10 Pantry

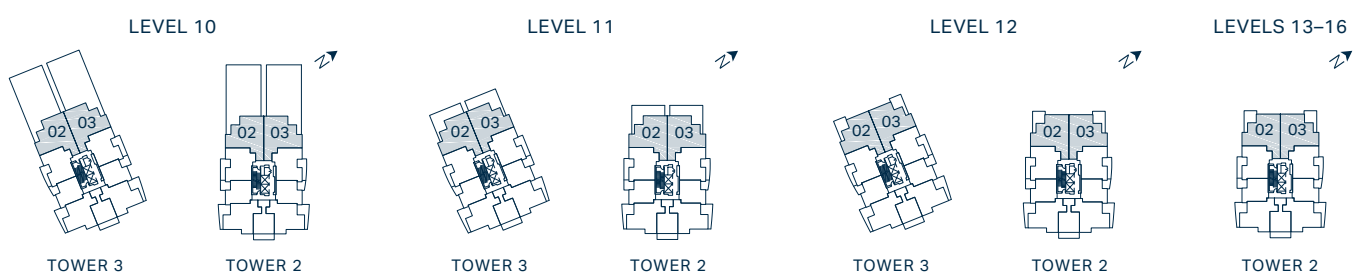
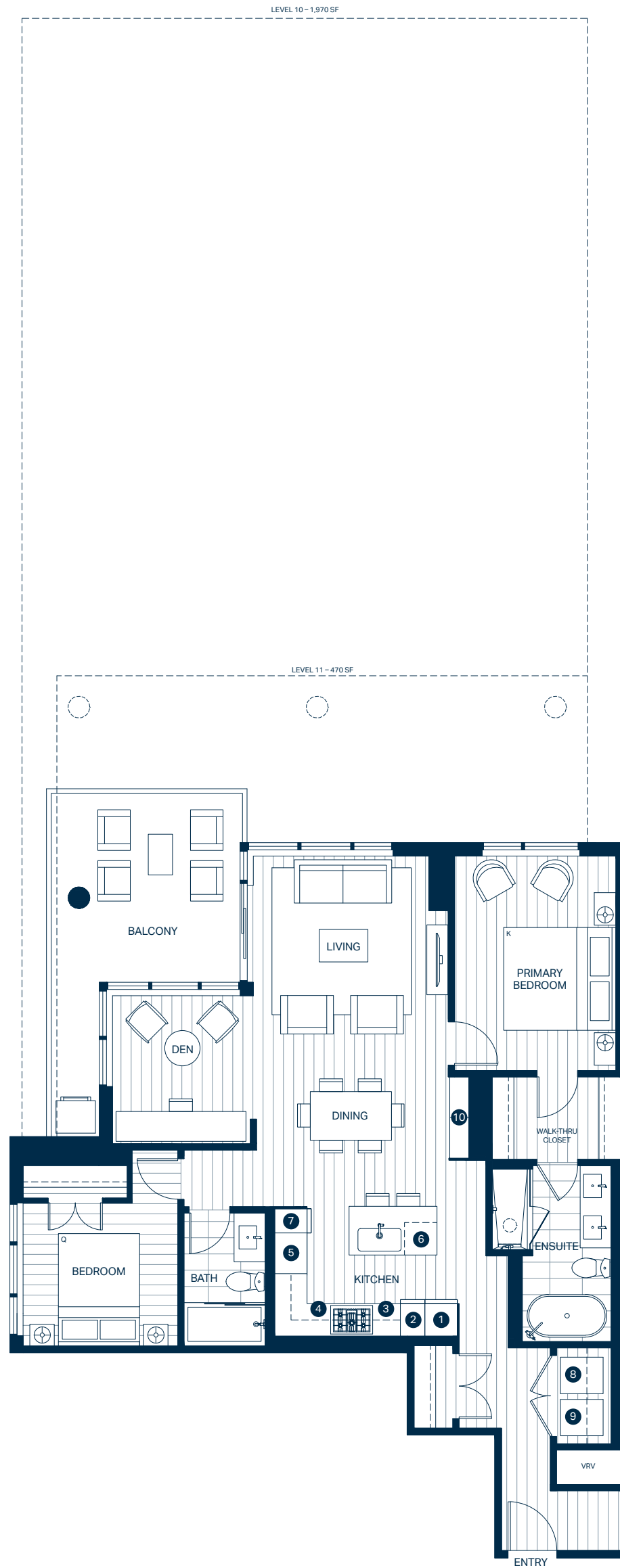
Interior	1,035 SF
Exterior	201 – 478 SF
Total	1,236 – 1,513 SF



Floor plan may be reversed layout depending on tower and orientation. This is not an offering for sale. Any such offering can only be made after filing a disclosure statement. The builder reserves the right to make changes, modifications or substitutions to the building design, specifications and floor plans should they be necessary. Square footage and room sizes are approximate and actual square footage may vary slightly. E.&O.E.

- 1 24" Thermador Integrated Refrigerator
- 2 18" Thermador Integrated Freezer
- 3 30" Thermador 5-Burner Gas Cooktop
- 4 21" Broan Hood Fan
- 5 30" Thermador Combination
Wall Oven / Speed Oven
- 6 24" Thermador Integrated Dishwasher
- 7 18" Thermador Full Height Integrated
Wine Fridge
- 8 Electrolux Full Sized Washing Machine
- 9 Electrolux Full Sized Dryer
- 10 Pantry

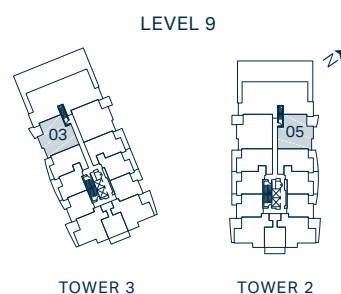
Interior 1,135 SF
 Exterior 175 – 1,970 SF
 Total 1,310 – 3,105 SF



Floor plan may be reversed layout depending on tower and orientation. This is not an offering for sale. Any such offering can only be made after filing a disclosure statement. The builder reserves the right to make changes, modifications or substitutions to the building design, specifications and floor plans should they be necessary. Square footage and room sizes are approximate and actual square footage may vary slightly. E.&O.E.

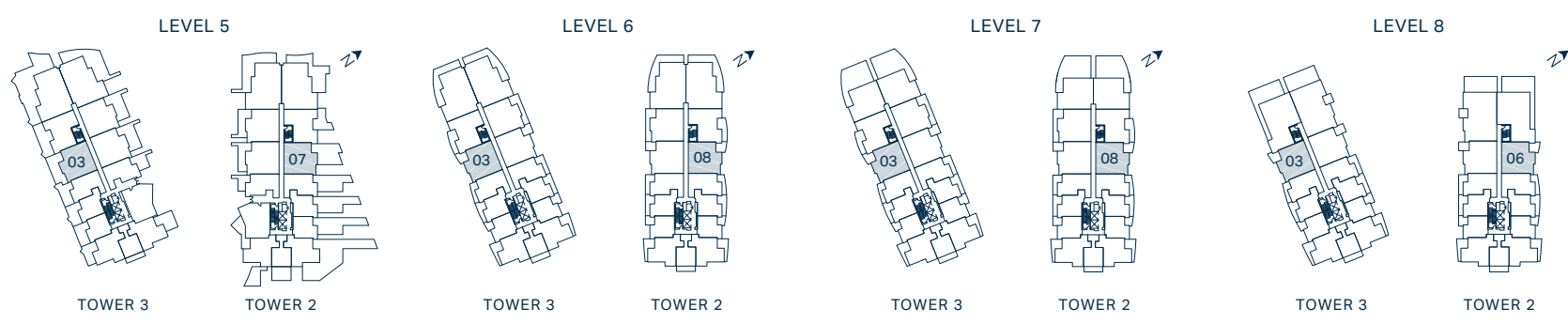
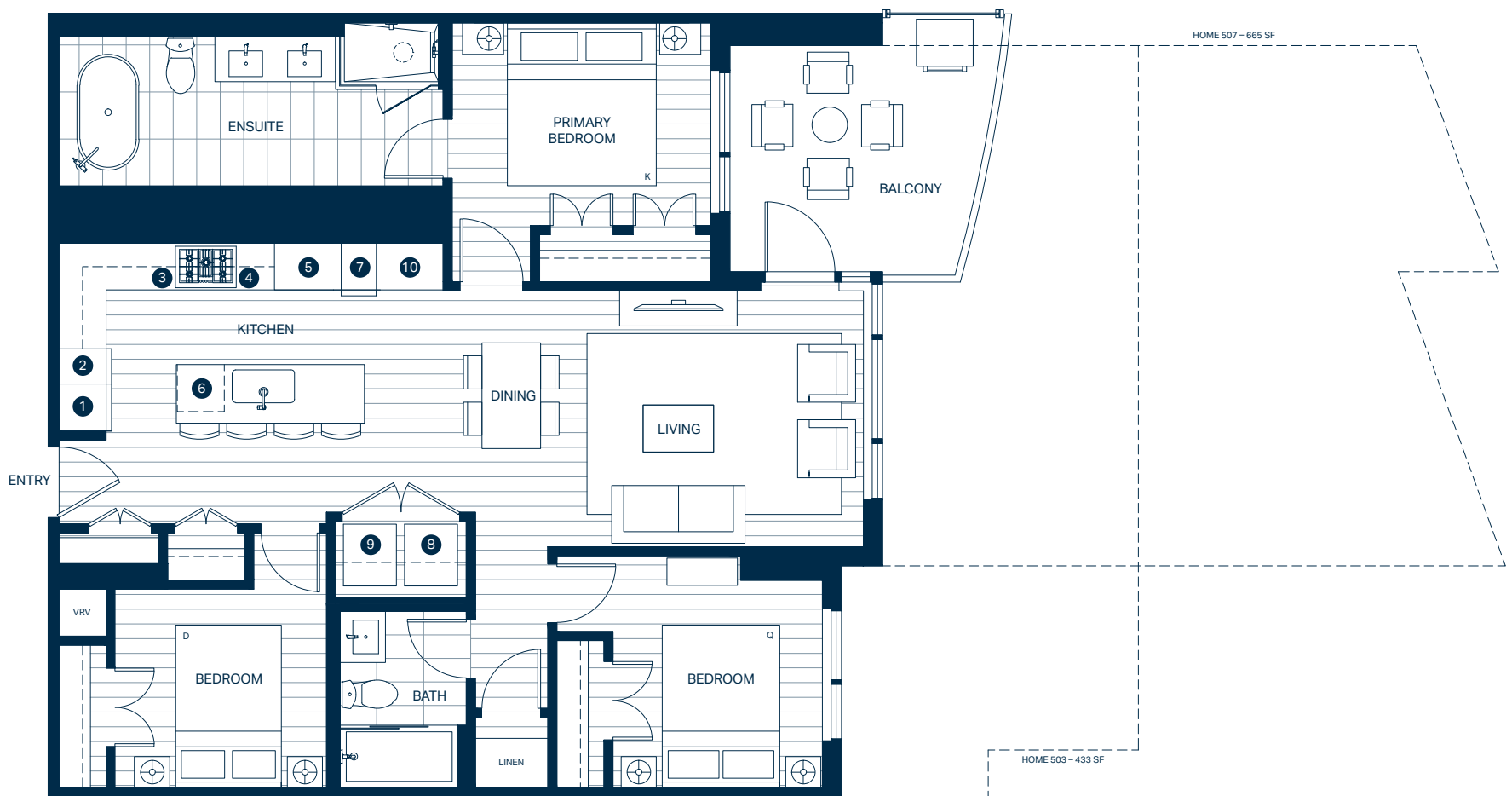
- 1 24" Thermador Integrated Refrigerator
- 2 18" Thermador Integrated Freezer
- 3 30" Thermador 5-Burner Gas Cooktop
- 4 21" Broan Hood Fan
- 5 30" Thermador Combination Wall Oven / Speed Oven
- 6 24" Thermador Integrated Dishwasher
- 7 18" Thermador Full Height Integrated Wine Fridge
- 8 Electrolux Full Sized Washing Machine
- 9 Electrolux Full Sized Dryer
- 10 Pantry

Interior 1,050 SF
 Exterior 125 SF
 Total 1,175 SF



- 1 24" Thermador Integrated Refrigerator
- 2 18" Thermador Integrated Freezer
- 3 30" Thermador 5-Burner Gas Cooktop
- 4 21" Broan Hood Fan
- 5 30" Thermador Combination Wall Oven / Speed Oven
- 6 24" Thermador Integrated Dishwasher
- 7 18" Thermador Full Height Integrated Wine Fridge
- 8 Electrolux Full Sized Washing Machine
- 9 Electrolux Full Sized Dryer
- 10 Pantry

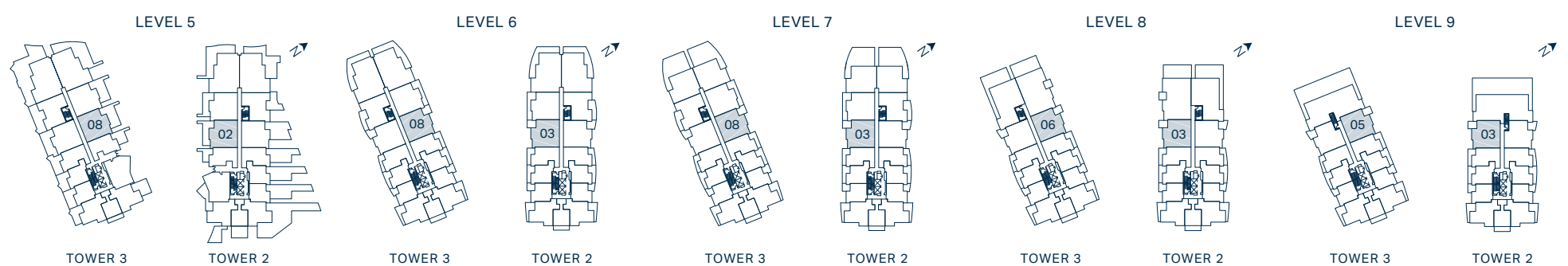
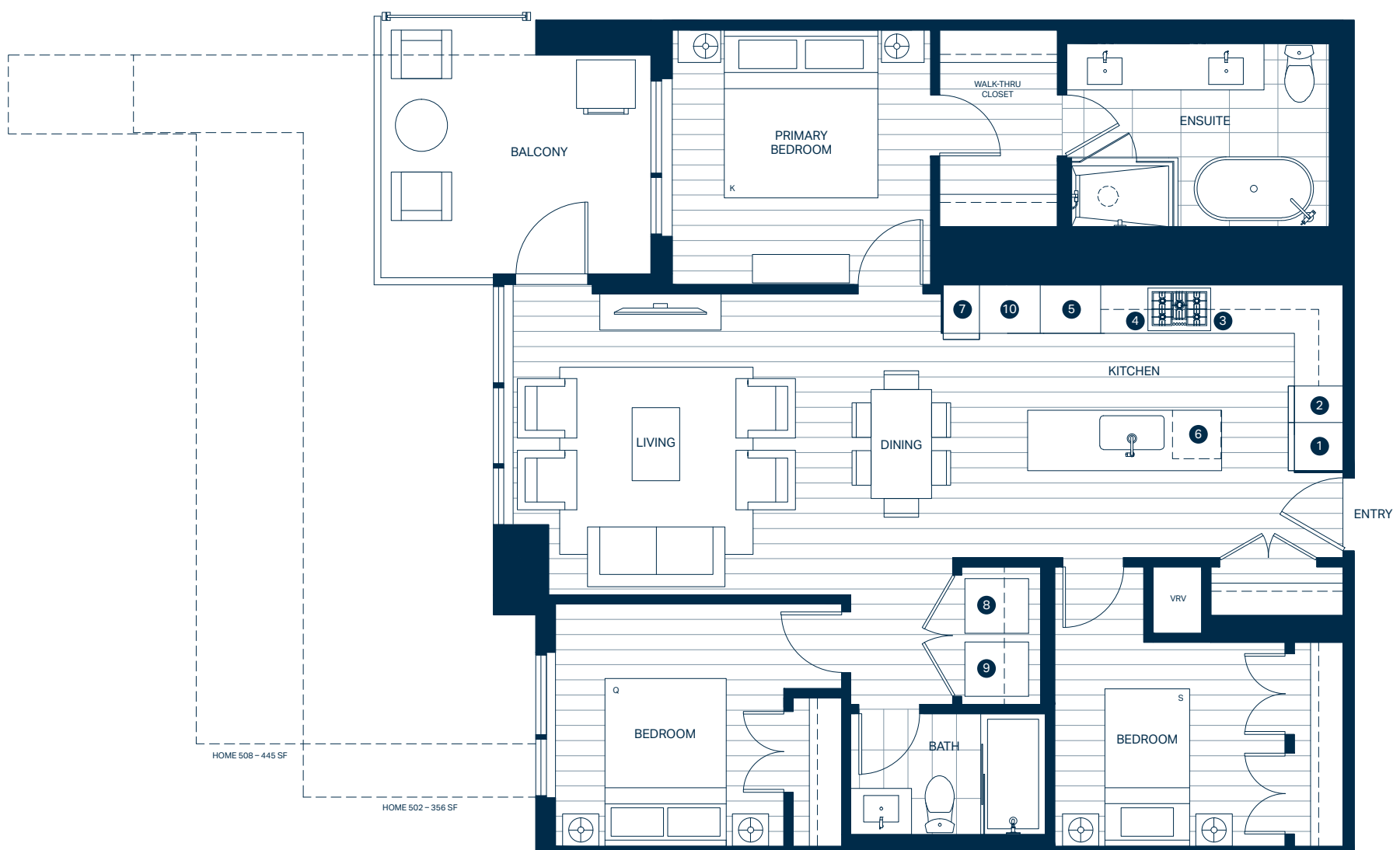
Interior 1,085 SF
 Exterior 120 – 665 SF
 Total 1,205 – 1,750 SF



Floor plan may be reversed layout depending on tower and orientation. This is not an offering for sale. Any such offering can only be made after filing a disclosure statement. The builder reserves the right to make changes, modifications or substitutions to the building design, specifications and floor plans should they be necessary. Square footage and room sizes are approximate and actual square footage may vary slightly. E.&O.E.

- 1 24" Thermador Integrated Refrigerator
- 2 18" Thermador Integrated Freezer
- 3 30" Thermador 5-Burner Gas Cooktop
- 4 21" Broan Hood Fan
- 5 30" Thermador Combination Wall Oven / Speed Oven
- 6 24" Thermador Integrated Dishwasher
- 7 18" Thermador Full Height Integrated Wine Fridge
- 8 Electrolux Full Sized Washing Machine
- 9 Electrolux Full Sized Dryer
- 10 Pantry

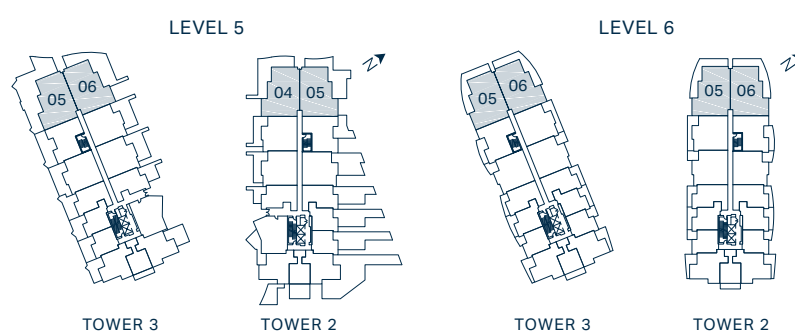
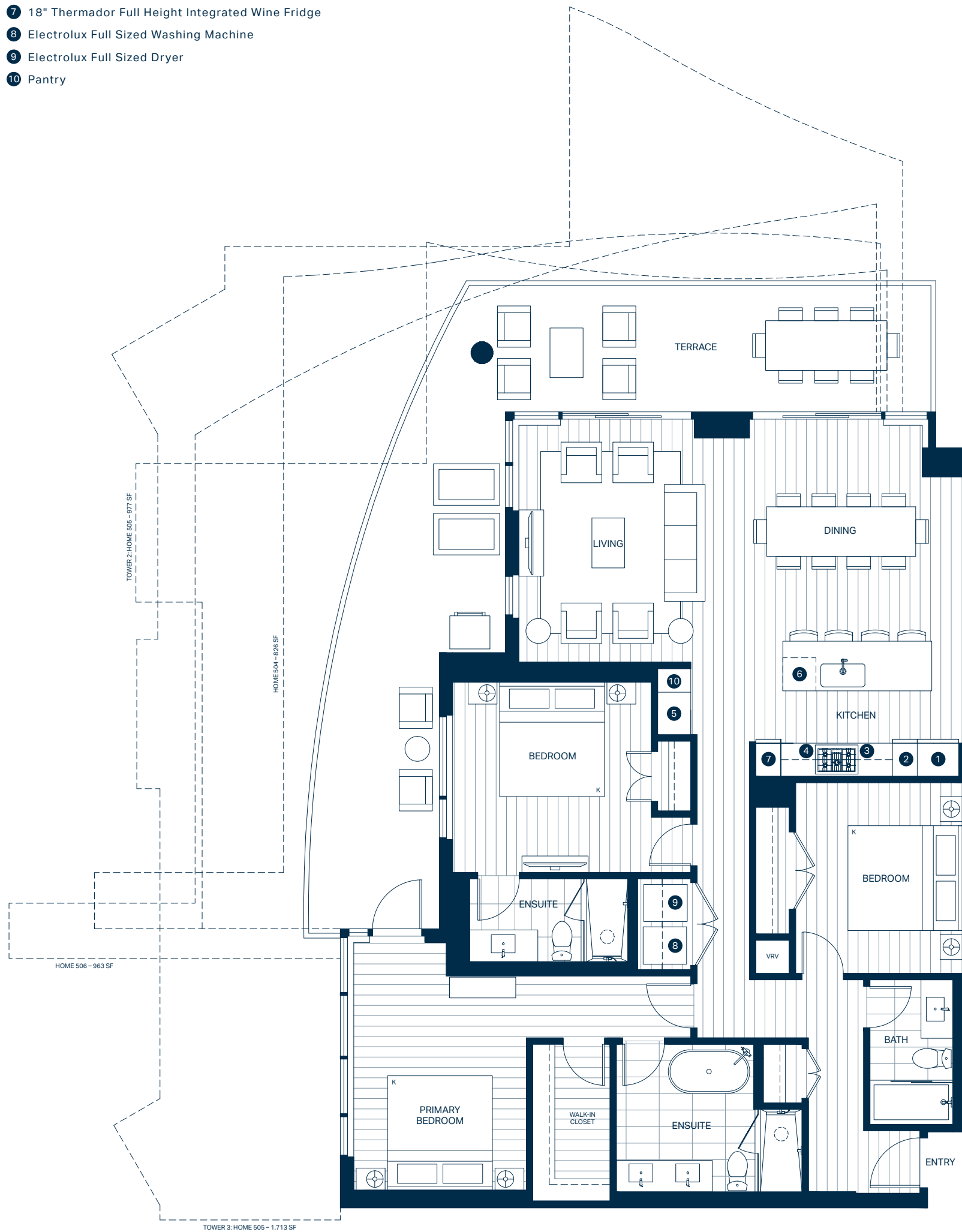
Interior	1,125 SF
Exterior	115 – 445 SF
Total	1,240 – 1,570 SF



Floor plan may be reversed layout depending on tower and orientation. This is not an offering for sale. Any such offering can only be made after filing a disclosure statement. The builder reserves the right to make changes, modifications or substitutions to the building design, specifications and floor plans should they be necessary. Square footage and room sizes are approximate and actual square footage may vary slightly. E.&O.E.

- 1 30" Thermador Integrated Refrigerator
- 2 18" Thermador Integrated Freezer
- 3 36" Thermador 5-Burner Gas Cooktop
- 4 30" Broan Hood Fan
- 5 30" Thermador Combination Wall Oven / Speed Oven
- 6 24" Thermador Integrated Dishwasher
- 7 18" Thermador Full Height Integrated Wine Fridge
- 8 Electrolux Full Sized Washing Machine
- 9 Electrolux Full Sized Dryer
- 10 Pantry

Interior 1,550 SF
 Exterior 519 – 1,713 SF
 Total 2,069 – 3,263 SF



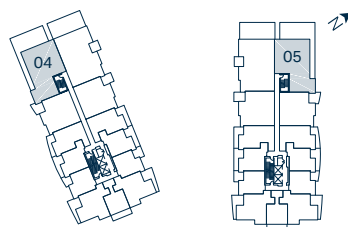
Floor plan may be reversed layout depending on tower and orientation. This is not an offering for sale. Any such offering can only be made after filing a disclosure statement. The builder reserves the right to make changes, modifications or substitutions to the building design, specifications and floor plans should they be necessary. Square footage and room sizes are approximate and actual square footage may vary slightly. E.&O.E.

- 1 30" Thermador Integrated Refrigerator
- 2 18" Thermador Integrated Freezer
- 3 36" Thermador 5-Burner Gas Cooktop
- 4 30" Broan Hood Fan
- 5 30" Thermador Combination Wall Oven / Speed Oven
- 6 24" Thermador Integrated Dishwasher
- 7 18" Thermador Full Height Integrated Wine Fridge
- 8 Electrolux Full Sized Washing Machine
- 9 Electrolux Full Sized Dryer

Interior 1,645 SF
 Exterior 785 SF
 Total 2,430 SF



LEVEL 8

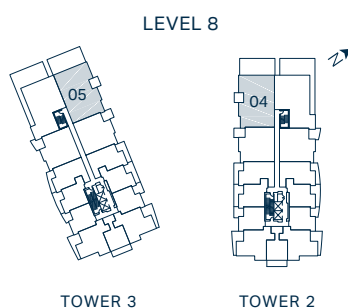
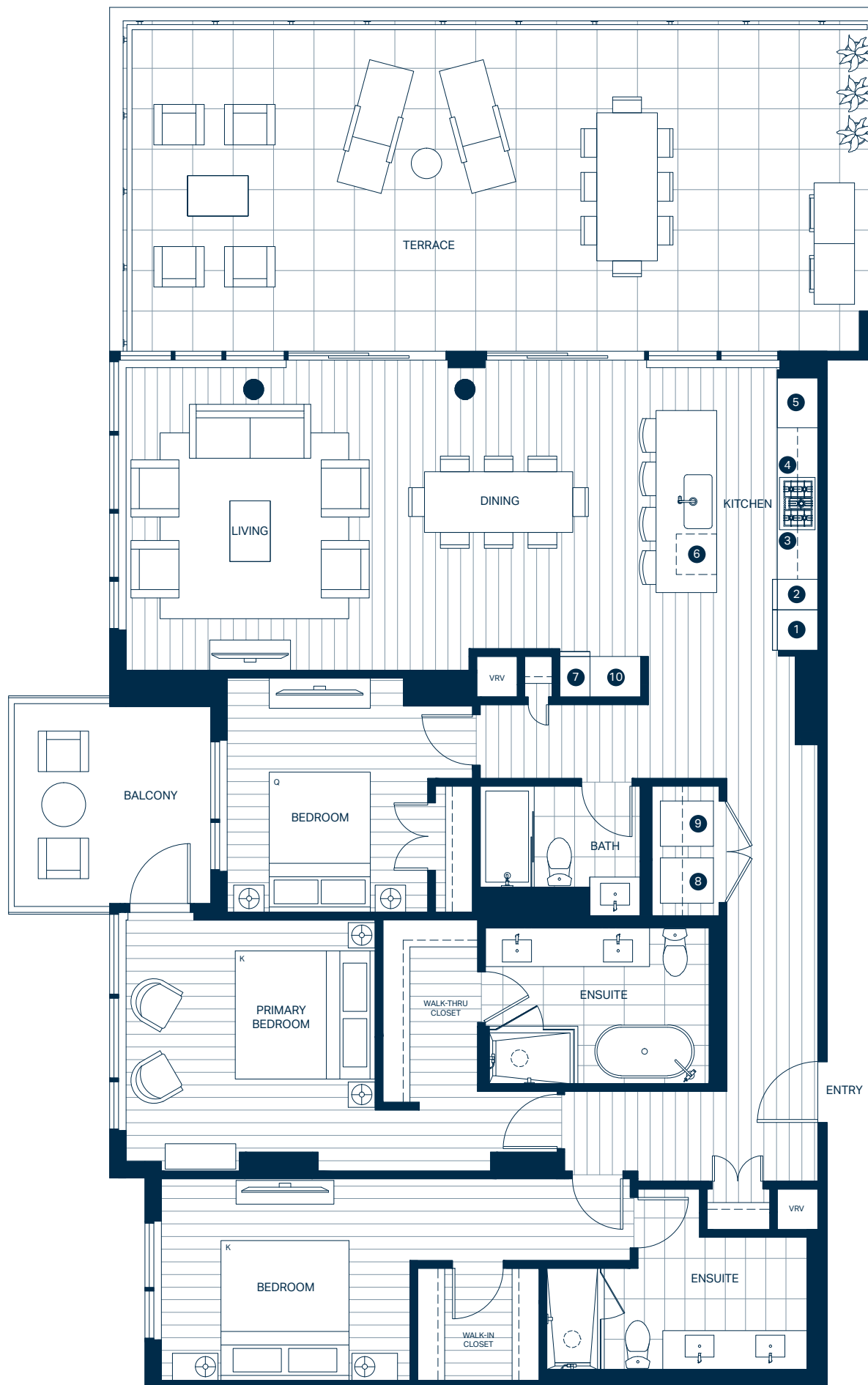


TOWER 3

TOWER 2

- 1 30" Thermador Integrated Refrigerator
- 2 18" Thermador Integrated Freezer
- 3 36" Thermador 5-Burner Gas Cooktop
- 4 30" Broan Hood Fan
- 5 30" Thermador Combination Wall Oven / Speed Oven
- 6 24" Thermador Integrated Dishwasher
- 7 18" Thermador Full Height Integrated Wine Fridge
- 8 Electrolux Full Sized Washing Machine
- 9 Electrolux Full Sized Dryer
- 10 Pantry

Interior 1,730 SF
 Exterior 695 SF
 Total 2,425 SF



AQUA

WATERFRONT VILLAGE

Penthouse One

2 Bedroom, 2 Bath

- 1 30" Thermador Integrated Refrigerator
- 2 18" Thermador Integrated Freezer
- 3 36" Thermador 5-Burner Gas Cooktop
- 4 30" Broan Hood Fan
- 5 30" Thermador Combination Wall Oven / Speed Oven
- 6 24" Thermador Integrated Dishwasher
- 7 18" Thermador Full Height Integrated Wine Fridge
- 8 Electrolux Full Sized Washing Machine
- 9 Electrolux Full Sized Dryer
- 10 Pantry
- 11 50" Napoleon Electric Fireplace

Interior 1,070 SF
 Exterior 246 SF
 Total 1,316 SF

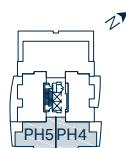


LEVEL 13



TOWER 3

LEVEL 17



TOWER 2

AQUA

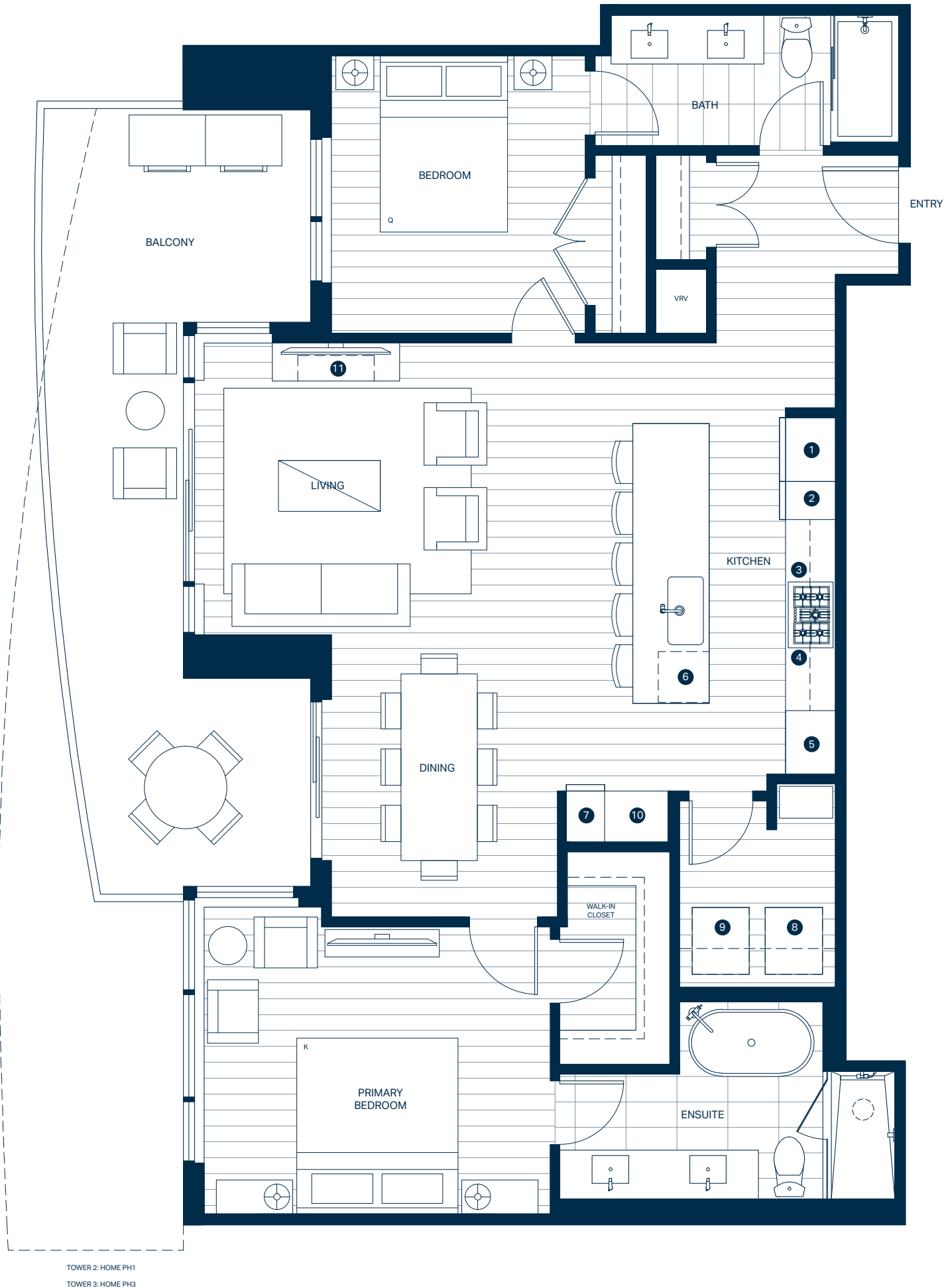
WATERFRONT VILLAGE

Penthouse Two

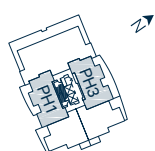
2 Bedroom, 2 Bath

- 1 30" Thermador Integrated Refrigerator
- 2 18" Thermador Integrated Freezer
- 3 36" Thermador 5-Burner Gas Cooktop
- 4 30" Broan Hood Fan
- 5 30" Thermador Combination Wall Oven / Speed Oven
- 6 24" Thermador Integrated Dishwasher
- 7 18" Thermador Full Height Integrated Wine Fridge
- 8 Electrolux Full Sized Washing Machine
- 9 Electrolux Full Sized Dryer
- 10 Pantry
- 11 50" Napoleon Electric Fireplace

Interior 1,175 SF
 Exterior 269 – 401 SF
 Total 1,444 – 1,576 SF

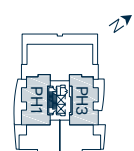


LEVEL 13



TOWER 3

LEVEL 17



TOWER 2

Floor plan may be reversed layout depending on tower and orientation. This is not an offering for sale. Any such offering can only be made after filing a disclosure statement. The builder reserves the right to make changes, modifications or substitutions to the building design, specifications and floor plans should they be necessary. Square footage and room sizes are approximate and actual square footage may vary slightly. E.&O.E.

AQUA

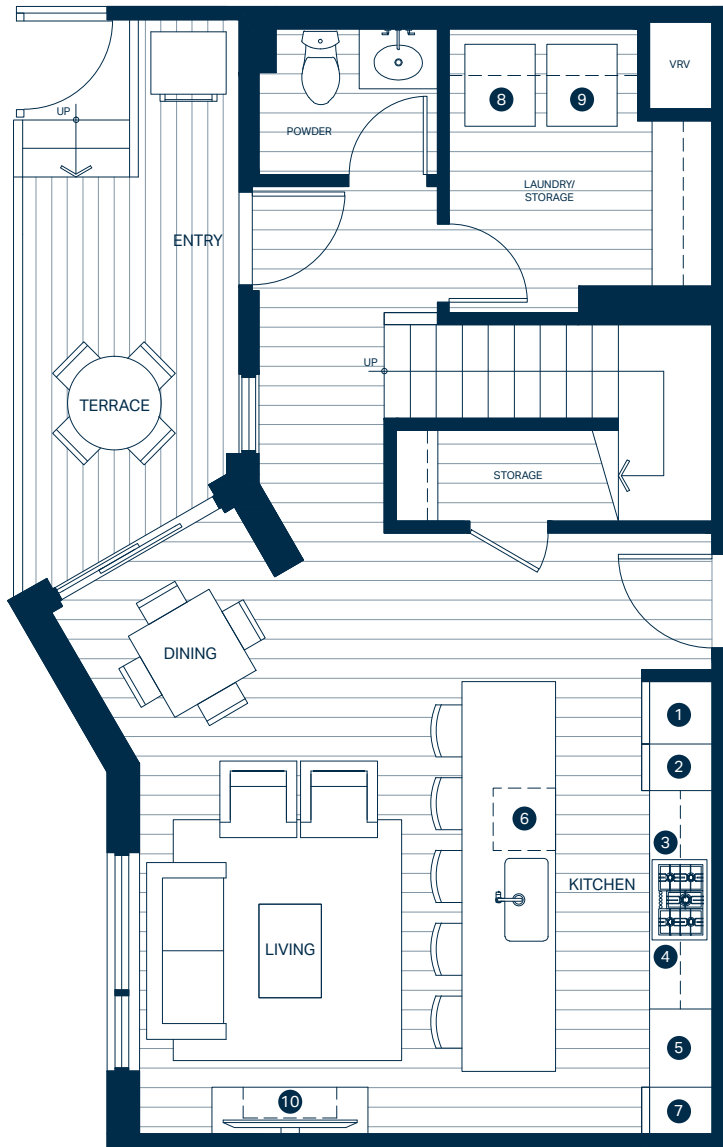
WATERFRONT VILLAGE

Lakehouse One

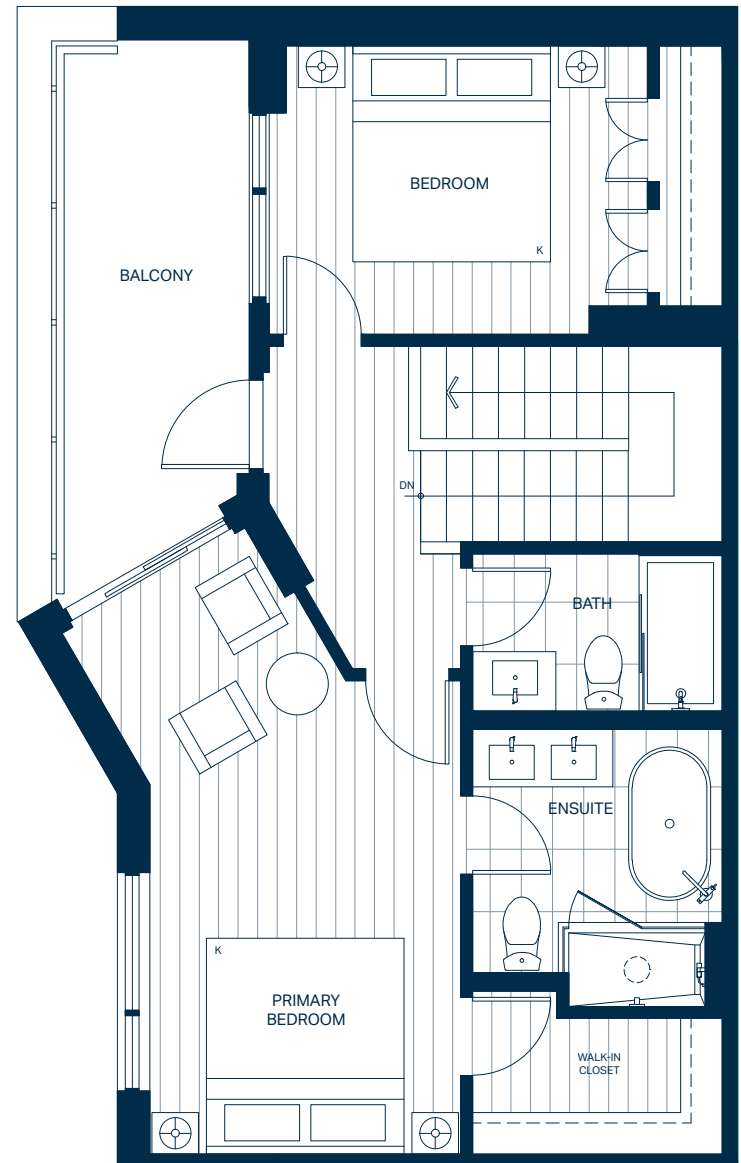
2 Bedroom, 2 Bath + 1 Half Bath

- 1 24" Thermador Integrated Refrigerator
- 2 18" Thermador Integrated Freezer
- 3 30" Thermador 5-Burner Gas Cooktop
- 4 21" Broan Hood Fan
- 5 30" Thermador Combination Wall Oven / Speed Oven
- 6 24" Thermador Integrated Dishwasher
- 7 18" Thermador Full Height Integrated Wine Fridge
- 8 Electrolux Full Sized Washing Machine
- 9 Electrolux Full Sized Dryer
- 10 50" Napoleon Electric Fireplace

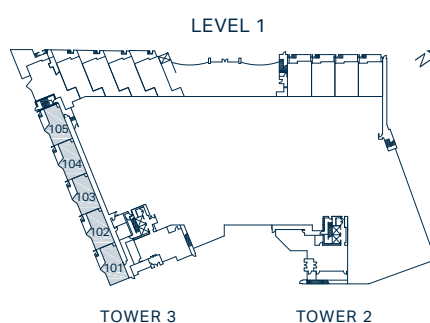
Interior 1,315 – 1,325 SF
 Exterior 237 – 245 SF
 Total 1,552 – 1,570 SF



MAIN



UPPER



TOWER 3

TOWER 2

AQUA

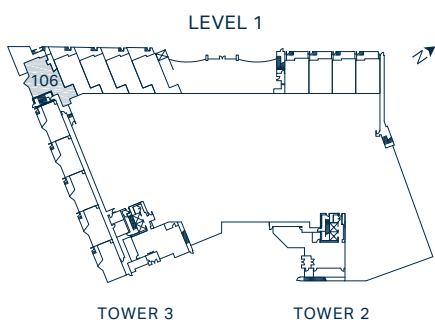
WATERFRONT VILLAGE

Lakehouse Two

2 Bedroom, 2 Bath

- 1 24" Thermador Integrated Refrigerator
- 2 18" Thermador Integrated Freezer
- 3 30" Thermador 5-Burner Gas Cooktop
- 4 21" Broan Hood Fan
- 5 30" Thermador Combination Wall Oven / Speed Oven
- 6 24" Thermador Integrated Dishwasher
- 7 18" Thermador Full Height Integrated Wine Fridge
- 8 Electrolux Full Sized Washing Machine
- 9 Electrolux Full Sized Dryer
- 10 50" Napoleon Electric Fireplace

Interior 1,270 SF
 Exterior 541 SF
 Total 1,811 SF



Floor plan may be reversed layout depending on tower and orientation. This is not an offering for sale. Any such offering can only be made after filing a disclosure statement. The builder reserves the right to make changes, modifications or substitutions to the building design, specifications and floor plans should they be necessary. Square footage and room sizes are approximate and actual square footage may vary slightly. E.&O.E.

AQUA

WATERFRONT VILLAGE

Lakehouse Three

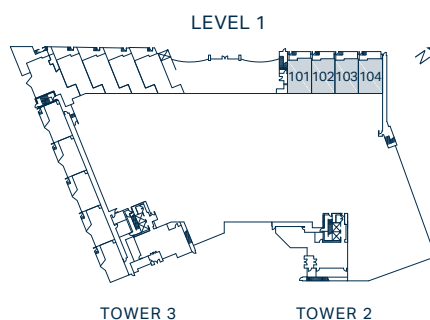
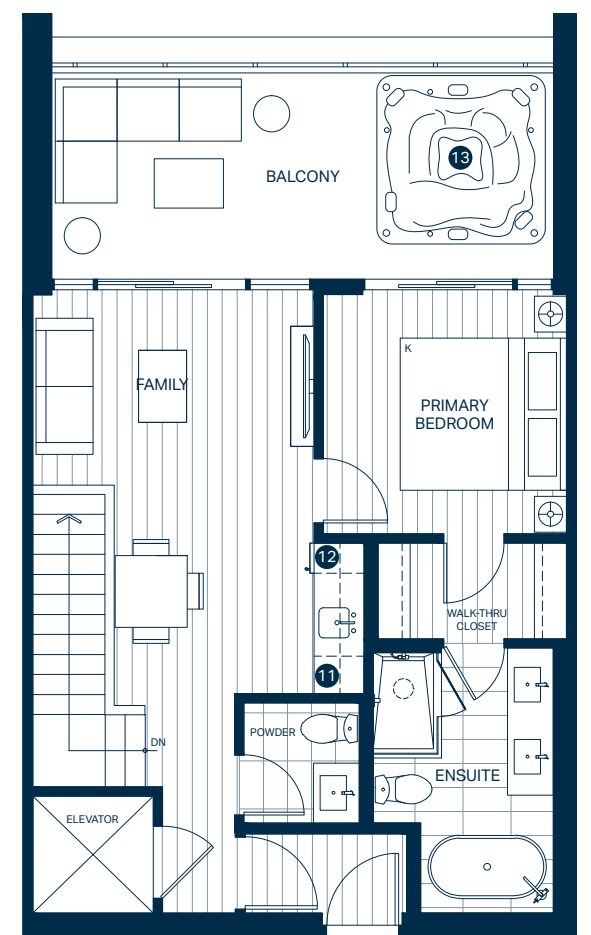
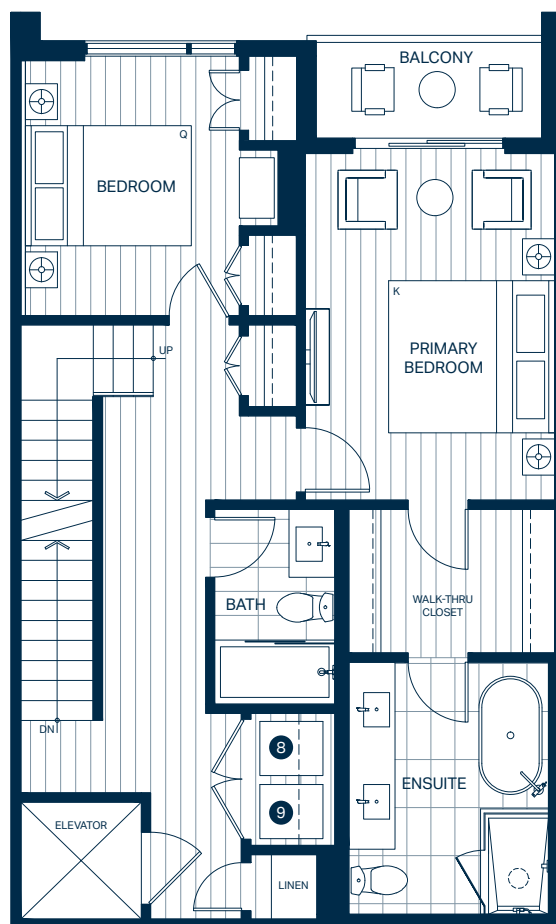
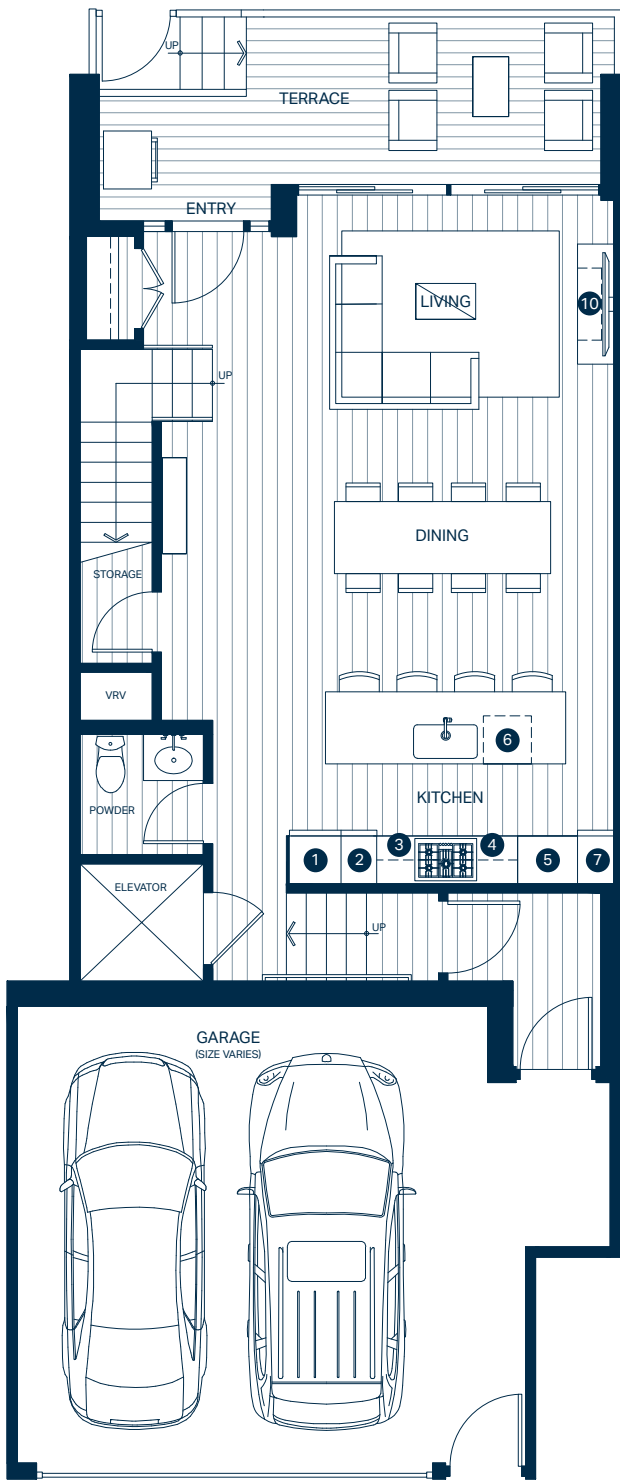
3 Bedroom, 3 Bath + 2 Half Bath

- 1 24" Thermador Integrated Refrigerator
- 2 18" Thermador Integrated Freezer
- 3 30" Thermador 5-Burner Gas Cooktop
- 4 21" Broan Hood Fan
- 5 30" Thermador Combination Wall Oven / Speed Oven
- 6 24" Thermador Integrated Dishwasher
- 7 18" Thermador Full Height Integrated Wine Fridge
- 8 Electrolux Full Sized Washing Machine
- 9 Electrolux Full Sized Dryer
- 10 50" Napoleon Electric Fireplace
- 11 18" Bosch Stainless Steel Dishwasher
- 12 15" Silhouette Under Counter Beverage Fridge
- 13 5-6 Seat Master Spas Hot Tub

Interior 2,190 – 2,210 SF

Exterior 457 – 466 SF

Total 2,647 – 2,676 SF



AQUA

WATERFRONT VILLAGE

Lakehouse Five

4 Bedroom, 4 Bath + 2 Half Bath

- 1 30" Thermador Integrated Refrigerator
- 2 18" Thermador Integrated Freezer
- 3 30" Thermador 5-Burner Gas Cooktop
- 4 21" Broan Hood Fan
- 5 30" Thermador Combination Wall Oven / Speed Oven
- 6 24" Thermador Integrated Dishwasher
- 7 18" Thermador Full Height Integrated Wine Fridge
- 8 Electrolux Full Sized Washing Machine
- 9 Electrolux Full Sized Dryer
- 10 50" Napoleon Electric Fireplace
- 11 18" Bosch Stainless Steel Dishwasher
- 12 15" Silhouette Under Counter Beverage Fridge
- 13 5-6 Seat Master Spas Hot Tub

Interior 2,635 – 2,650 SF
 Exterior 511 – 522 SF
 Total 3,146 – 3,172 SF



Floor plan may be reversed layout depending on tower and orientation. This is not an offering for sale. Any such offering can only be made after filing a disclosure statement. The builder reserves the right to make changes, modifications or substitutions to the building design, specifications and floor plans should they be necessary. Square footage and room sizes are approximate and actual square footage may vary slightly. E.&O.E.