



**NOW LEASING:**  
**HIGH PROFILE RETAIL SPACE IN**  
**THE HEART OF KELOWNA**

**ELLA** 1588 Ellis Street, Kelowna BC

---

**DETAILS**

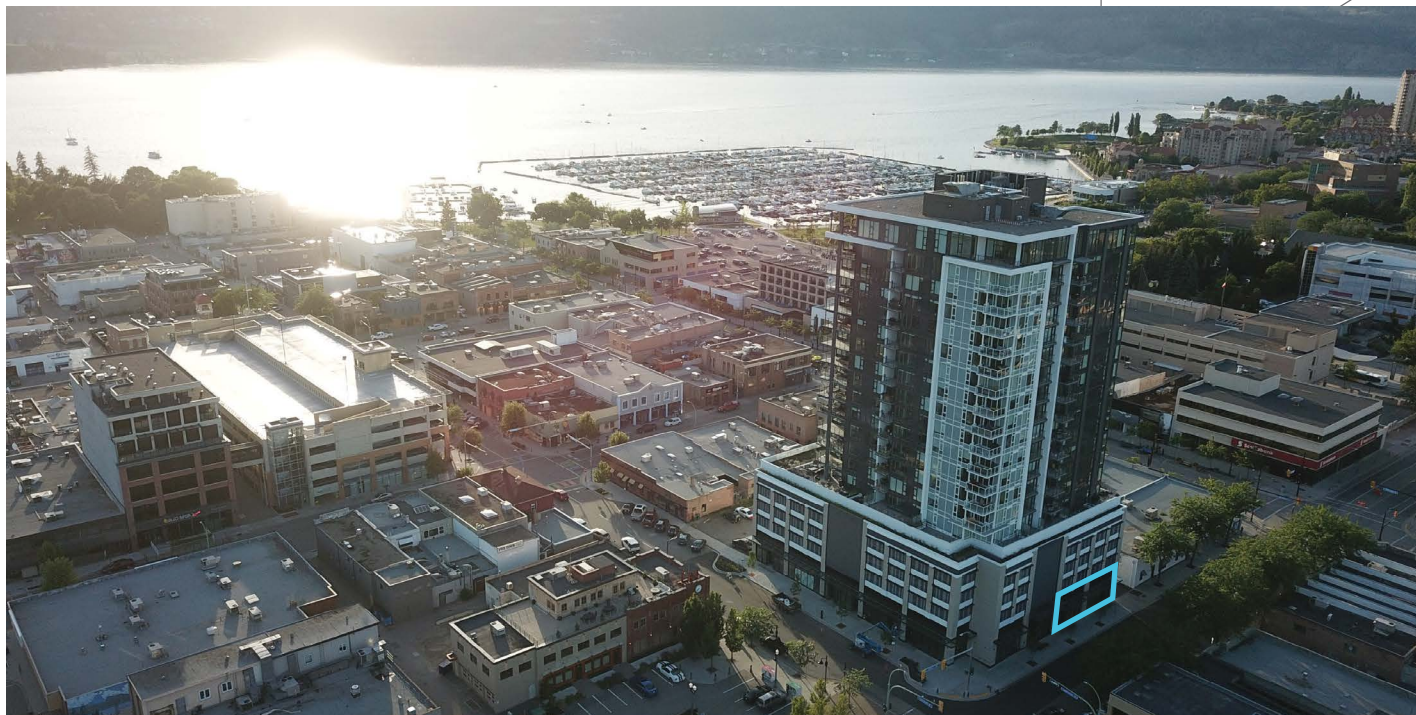
- Opportunity to lease prominent retail space in Downtown Kelowna
  - Frontage on the high-traffic Ellis Street
  - 1,560 Sq. Ft. available with demising options
  - Average Population of 54,713 within a 10-minute radius
- 

BUILT, OWNED, & OPERATED BY



**MISSION GROUP**

## PROPERTY DETAILS



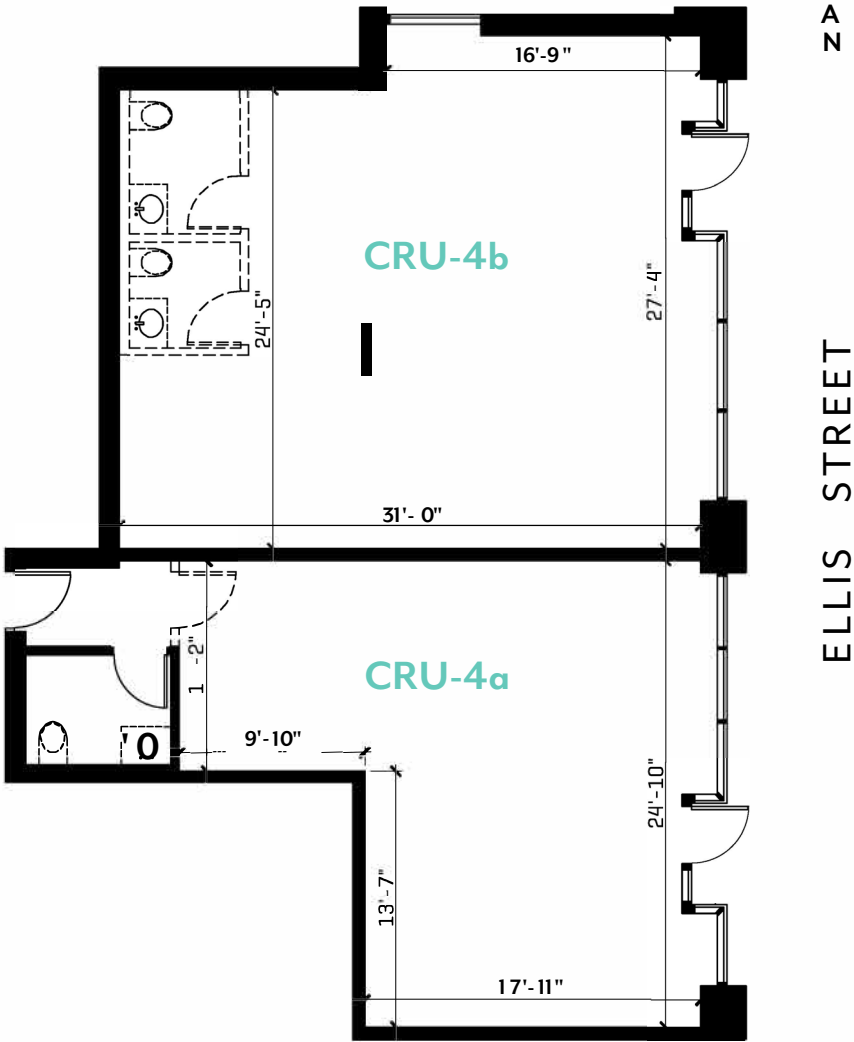
CIVIC ADDRESS	1588 Ellis Street, Kelowna, BC
ZONING	C7, Central Business Commercial
PROJECT DESCRIPTION	ELLA is a 20-storey, commercial and residential tower, completed in 2020 by Mission Group – bringing increased density and population counts to the area.
AVAILABLE SPACE	1,560 Sq. Ft. of available retail space, with demising options
ADDITIONAL RENT	\$9.09 per SF est. 2022
LEASE RATE	Please contact Mission Group Commercial Leasing on 250.317.6998 or <a href="mailto:mgleasing@missiongroup.ca">mgleasing@missiongroup.ca</a>

SITE PLAN



# AVAILABLE UNITS

CRU 4A 647.4 SQ.FT.  
CRU 4B 912.6 SQ.FT.  
CRU 4 Total 1,560 SQ.FT.





# DEMOGRAPHICS

## 0-5 MIN RADIUS

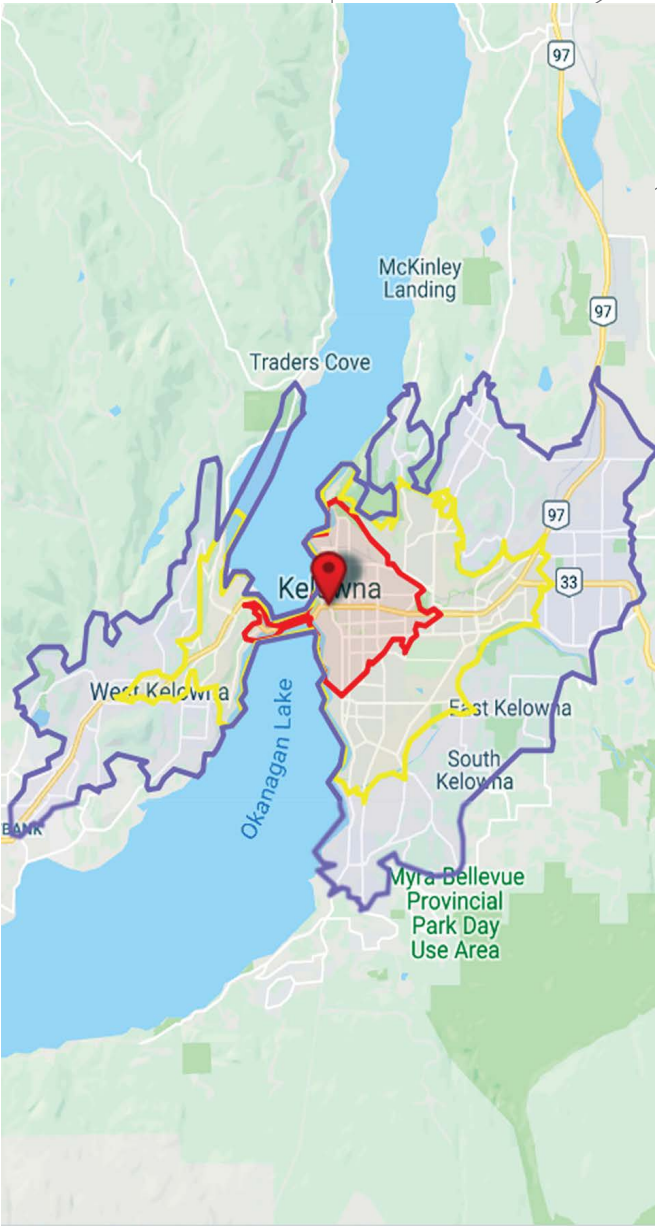
Total Population (2018)	25,370
Projected Population	27,291
Population Distribution	
0-24 years	4,935
25-49 years	10,136
50-74 years	7,299
75+ years	2,999
Average Household Income (2018)	\$75,087
Projected Household Income (2023)	\$87,677
Total Households (2018)	12,743
Projected Households (2023)	13,877

## 0-10 MIN RADIUS

Total Population (2018)	54,713
Projected Population	59,207
Population Distribution	
0-24 years	10,942
25-49 years	18,696
50-74 years	17,028
75+ years	8,047
Average Household Income (2018)	\$81,206
Projected Household Income (2023)	\$94,543
Total Households (2018)	23,098
Projected Households (2023)	28,452

## 0-15 MIN RADIUS

Total Population (2018)	117,836
Projected Population	127,961
Population Distribution	
0-24 years	27,812
25-49 years	39,261
50-74 years	36,919
75+ years	13,842
Average Household Income (2018)	\$90,262
Projected Household Income (2023)	\$105,118
Total Households (2018)	51,465
Projected Households (2023)	56,092



# BUILD IT FORWARD

Since 2004, Mission Group has been contributing to the evolution of Kelowna's urban landscape. We believe in a holistic approach to community growth. Inclusive communities become the best places to live – this is our hope for Kelowna. Our 'social purpose' is woven into the fabric of our strategy. It is not a bolted-on activity for external gratification; rather, it is simply what we do to build on our past successes.

---

## MISSION GROUP COMMERCIAL LEASING

**Christopher Rundle**

Commercial Leasing Manager

Call **250.317.6998**

Email **[mgleasing@missiongroup.ca](mailto:mgleasing@missiongroup.ca)**

---

BUILT, OWNED, & OPERATED BY



**MISSION GROUP**